



Wedding/Event Venue on Historic Crowe Dairy Farm

Patrick Gray

336.705.0675 | patgray@kw.com

Andrew Hewitt, Managing Partner

864.316.5050 | ahewitt@hewittcre.com



HEWITT
COMMERCIAL REAL ESTATE

OVERVIEW

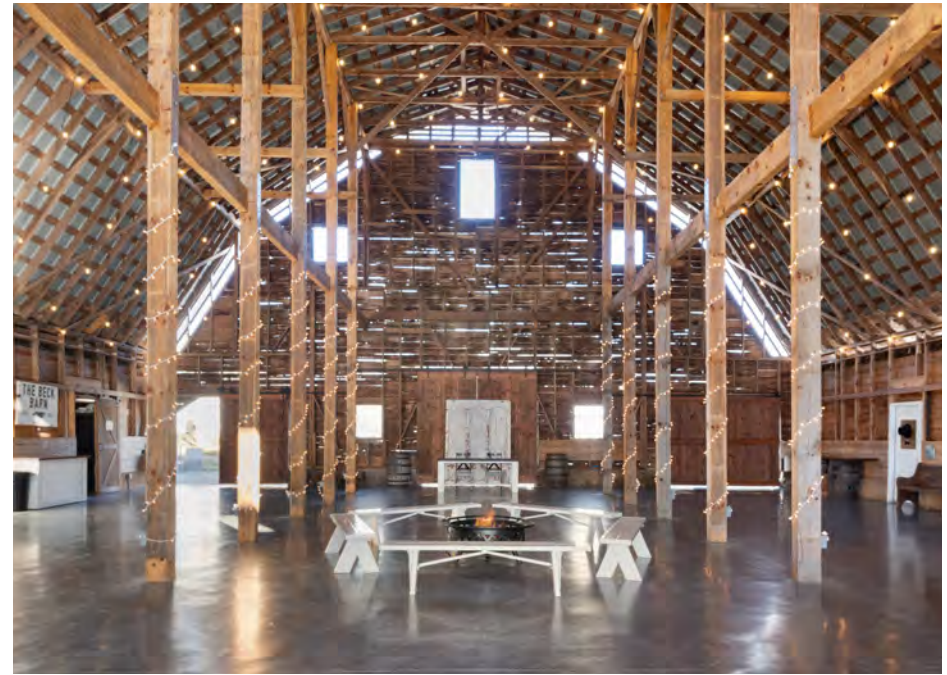
Property Type: Wedding/Event Venue

PIN #: 1528829729
Rutherford County

Price: \$1,300,000

Features

- Beautiful 13.7 AC property with gorgeous 1940 Dairy Barn that has been lovingly restored.
- Operating as an event & wedding venue since 2020, the nearly 6,000 SF barn features a huge reception hall, modern and elegantly decorated bride & groom quarters, 2 restrooms (1 with shower), 2 large storage rooms, and an expansive patio.
- Along with most of the decor and furnishings for the venue, included in the sale is the event business, a 2,912 SF home (built in '95), the barn/venue, a separate 543 SF catering kitchen with gas range and 3-compartment sink, a huge, 2,142 SF workshop (with plumbing!), an adorable 1,101 SF, 3-story storage barn, a 1,036 SF 2/1 single-wide mobile home, a new, 2-stall horse barn, and a gorgeous, masonry silo.



Patrick Gray

336.705.0675 | patgray@kw.com

Andrew Hewitt, Managing Partner

864.316.5050 | ahewitt@hewittcre.com



HEWITT
COMMERCIAL REAL ESTATE



Patrick Gray

336.705.0675 | patgray@kw.com

Andrew Hewitt, Managing Partner

864.316.5050 | ahewitt@hewittcre.com





Patrick Gray

336.705.0675 | patgray@kw.com

Andrew Hewitt, Managing Partner

864.316.5050 | ahewitt@hewittcre.com



HEWITT
COMMERCIAL REAL ESTATE



Patrick Gray

336.705.0675 | patgray@kw.com

Andrew Hewitt, Managing Partner

864.316.5050 | ahewitt@hewittcre.com



HEWITT
COMMERCIAL REAL ESTATE



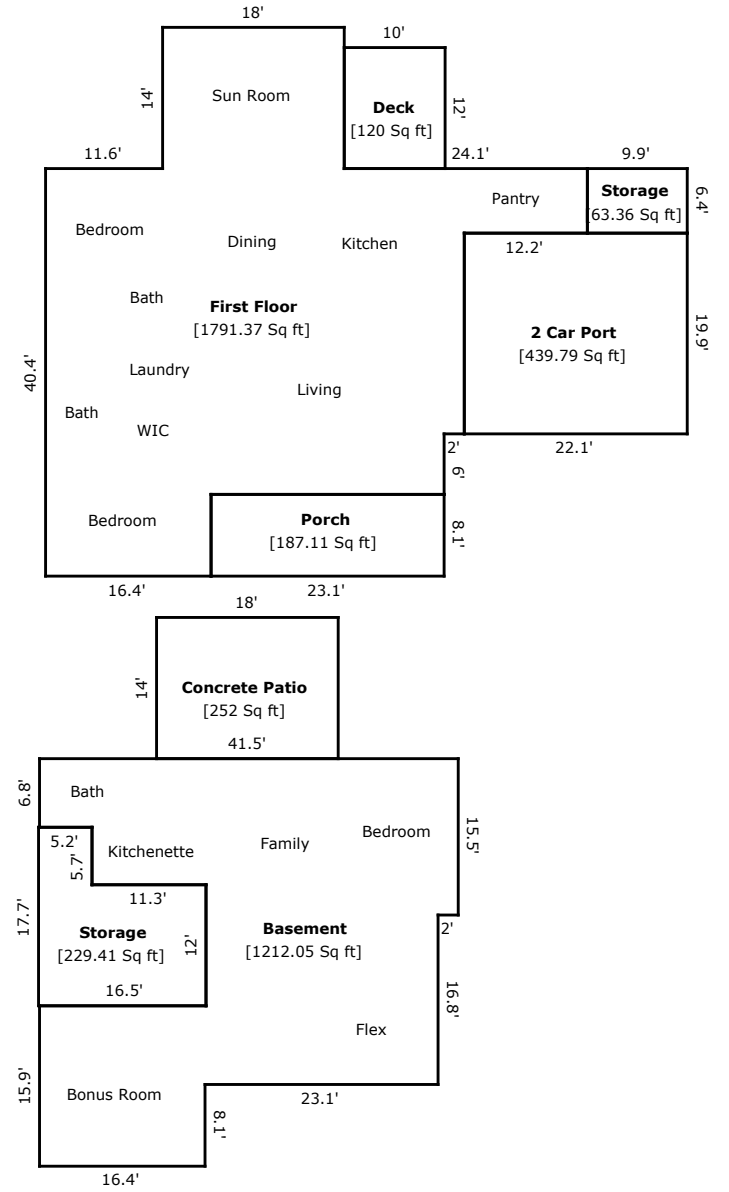
Patrick Gray

336.705.0675 | patgray@kw.com

Andrew Hewitt, Managing Partner

864.316.5050 | ahewitt@hewittcre.com

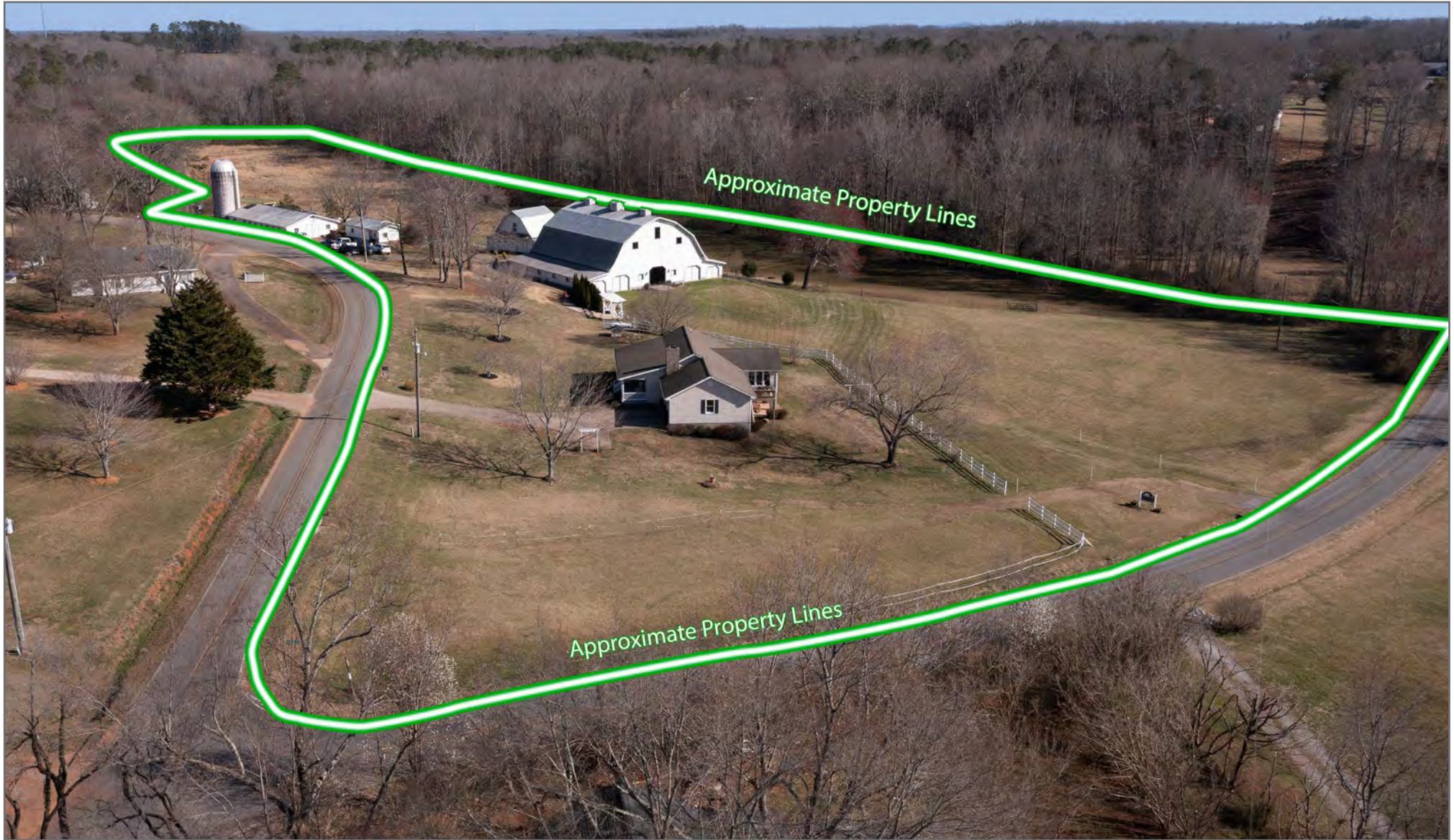




Patrick Gray
336.705.0675 | patgray@kw.com

Andrew Hewitt, Managing Partner
864.316.5050 | ahewitt@hewittcre.com





Patrick Gray

336.705.0675 | patgray@kw.com

Andrew Hewitt, Managing Partner

864.316.5050 | ahewitt@hewittcre.com



HEWITT
COMMERCIAL REAL ESTATE



Patrick Gray

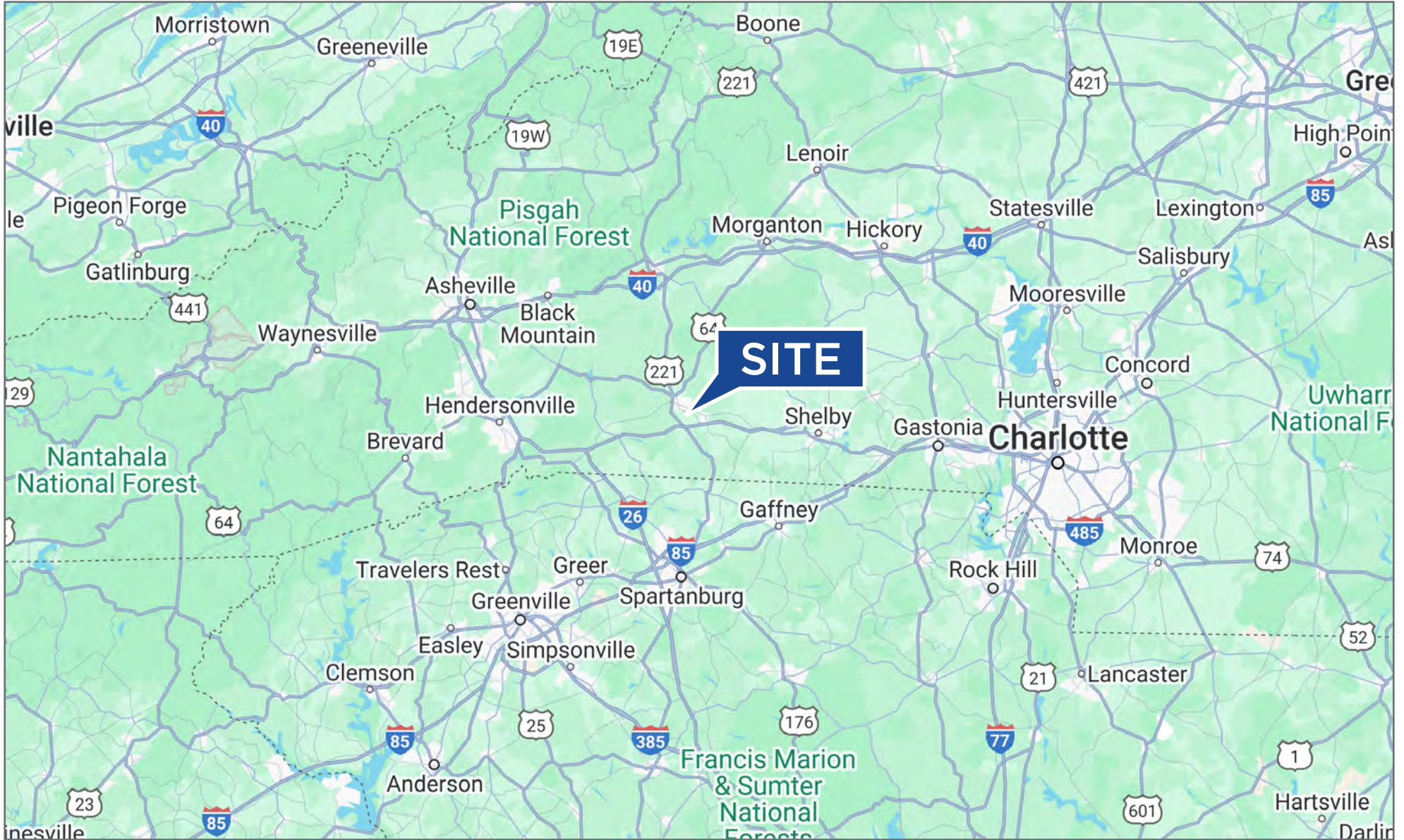
336.705.0675 | patgray@kw.com

Andrew Hewitt, Managing Partner

864.316.5050 | ahewitt@hewittcre.com



HEWITT
COMMERCIAL REAL ESTATE



Patrick Gray

336.705.0675 | patgray@kw.com

Andrew Hewitt, Managing Partner

864.316.5050 | ahewitt@hewittcre.com



HEWITT
COMMERCIAL REAL ESTATE